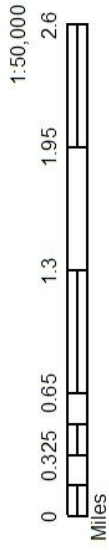
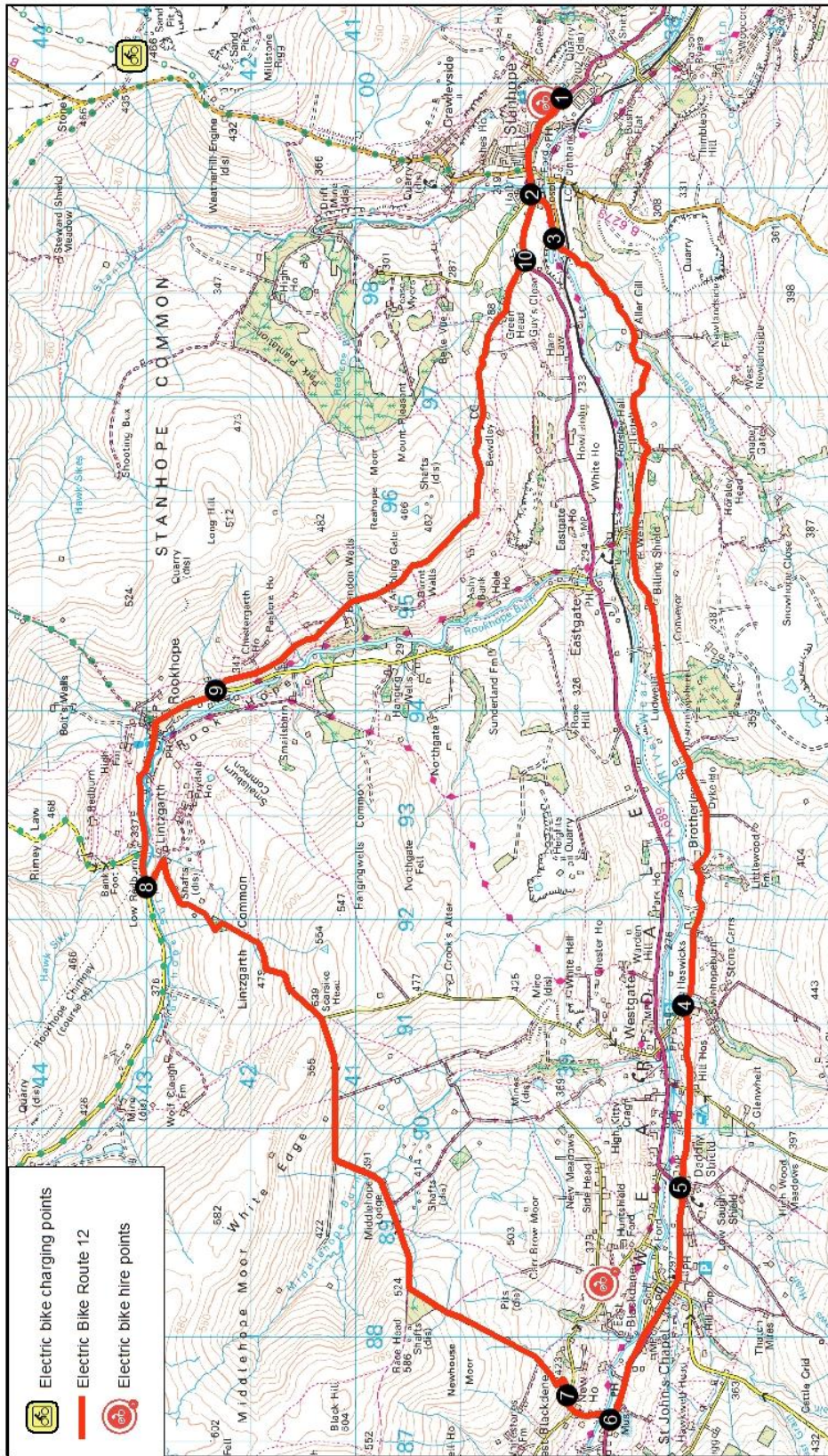


Route 12: Stanhope, St John's Chapel and Rookhope



32 km / 20 miles
 Recommended direction - clockwise



(c) Crown copyright. All rights reserved
 Durham County Council. LA 100049055. 2015



Route 12: Stanhope, St John's Chapel and Rookhope

Length: 20 miles (32km) **Time:** 3 – 3.5 hours
Start: Stanhope Community Transport Hub

Key: **R** = Right | **L** = Left | **TR** = Turn right | **TL** = Turn left | **SP** = Signposted | **T-j** = T-junction

1. From the Community Transport Hub in Stanhope, **TR** onto Front St. into the village
2. At the far end of the Village, **TL**, **SP** Eggleston and after a short distance cross the river bridge
3. **TR** immediately after the bridge, **SP** Horsley
4. After approximately 6km keep **L** at the T-j and continue to Daddry Shield
5. **TL** onto the main road into St John's Chapel
6. 1km beyond to St John's Chapel, **TR** into a minor road just beyond Weardale Museum, **SP** New House
7. After a steep climb, keep **L** and follow this minor road over the hill to the Rookhope Burn.
8. **TR** at the T-j to Rookhope
9. Having passed through **TL** immediately after the **L** bend. **SP** National Cycle Route 7. Follow this minor road over the moor.
10. At the A689 **TL** back into Stanhope, with the Hub to the **L**

