

The landowners at Low Force operate a permit system for canoeing and other water access activities on the upper reaches of the River Tees. Permits are available from Bowlees Visitor Centre, The Raby Estate Office and the gift shop at High Force.

For further information about the Code of Conduct please contact;

Simon Wilson
North Pennines AONB Partnership
1 Martin Street
Stanhope
Co Durham
DL13 2UY
Email: simon@northpenninesaonb.org.uk
Tel: 01388 528801



Bowlees Visitor Centre



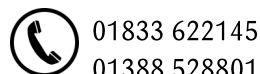
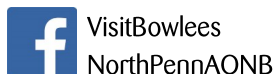
Eat Meet Discover Explore

With visitor information, a warm welcome and a good selection of homemade food at the cafe, Bowlees Visitor Centre near Low Force provides the perfect stopping off point for weary walkers and water sport enthusiasts.

The centre, which is run by the North Pennines AONB Partnership, has car parking, an electric vehicle charge point, a gift shop selling guide books, and an art gallery. The centre also has events and activities on throughout the year.

Open daily until the end of October and open weekends only from 5th November to 11th December. Check website for confirmation.

northpennines.org.uk visitbowlees.org.uk



NORTH PENNINES
Area of Outstanding Natural Beauty



Low Force

River Access Code of Conduct

Free – please take a copy



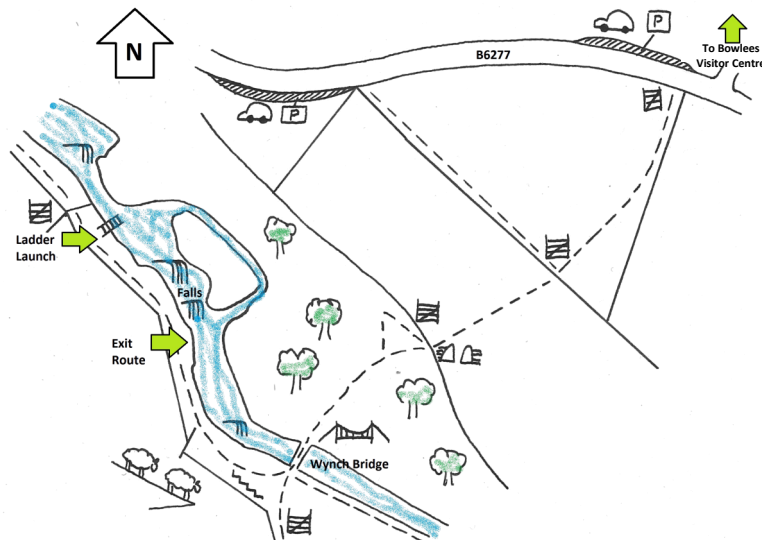
The River Tees at Low Force offers some of the best river access opportunities in the North Pennines. The exposure of the hard Whin Sill geology has created an excellent sequence of short falls that provide great water sport challenges.

Low Force is part of Natural England's Moor House – Upper Teesdale National Nature Reserve, one of the most protected landscapes in the UK due to its rare and species-rich habitats. It is designated as a Site of Special Scientific Interest (SSSI) and a Special Area of Conservation (SAC) due to its threatened species-rich grassland.

The Pennine Way trail runs alongside the southern bank of the Tees and over the years the area has come under pressure from walkers, as well as those seeking access to the river. To prevent further damage to the protected habitat, the North Pennines AONB Partnership has worked with partners and landowners to find ways of looking after the landscape while still allowing people to enjoy it.

This code of conduct has been written to ensure we can achieve both of these objectives and we ask that you follow it and enjoy the area responsibly.

Map of Low Force



Code of Conduct

- Avoid entering or exiting the water on vegetated areas.
- If launching from Holwick Head Bridge, avoid exiting before Low Force.
- When entering at Low Force, use the timber ladder launch at the location shown on the map. Do not launch from grass and vegetated areas.
- Only exit the river below the falls at the location shown on the map and on the photograph, **keeping within the white painted markers**. Don't exit at Wynch Bridge. Exit on the north bank at Scoberry Bridge (1km down stream).
- Keep group sizes to a maximum of 10.
- Do not enter roped / fenced-off vegetation recovery areas.
- Do not access the water from Wynch Bridge.
- Follow the Countryside Code and British Canoe Union Code of Conduct.
- Take litter home.
- Do not camp or light fires.
- Park in the car park at Bowlees Visitor Centre or in official laybys. Keep to public rights of way.

It is an offence under the Wildlife and Countryside Act 1981 (as amended) for any person, without reasonable excuse, to intentionally or recklessly damage or destroy any of the features of special interest of a Site of Special Scientific Interest (SSSI), or to disturb the wildlife for which the site was notified.

