

# North Pennine Birdwalks

## Walk 11: Dufton Pike



Landscapes  
for life  
.org.uk

**NORTH PENNINES**  
One of the  
AONB family

# The Birdwatchers Code of Conduct

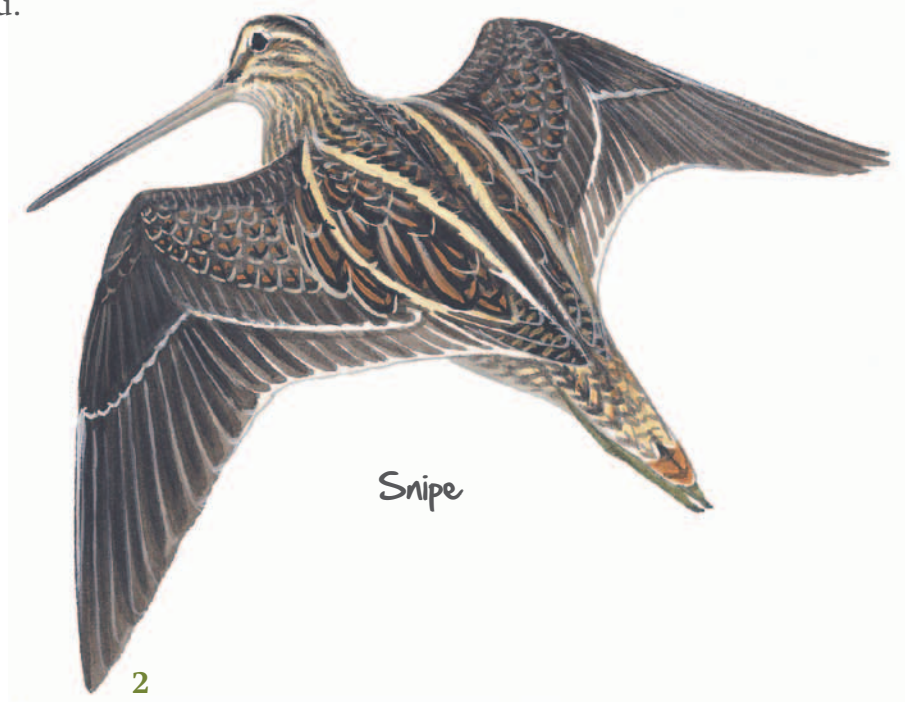
---

Birds are very vulnerable to disturbance, especially during the breeding season. It is all too easy to inadvertently harm a bird or its young while trying to watch them.

For example, if an adult bird is prevented from returning to its nest, eggs or chicks may quickly chill and die. Straying from a footpath towards a nest site may also leave a scent trail that a predator is later able to follow.

To ensure that you enjoy watching birds without harming them or their young, please always follow this code of conduct:

- The welfare of the birds must come first. Disturbance to birds and their habitats should be kept to a minimum.
- Keep to footpaths, especially during the bird breeding season (March – August).
- Avoid disturbing birds or keeping them away from their nests for even short periods especially in wet or cold weather.
- Do not try to find nests. **All birds, nests, eggs and young are protected by law and it is illegal to harm them.**
- Keep dogs on a short lead.
- Leave gates and property as you find them.
- Take your litter home with you.





# Walk 11

## Dufton Pike



Dufton Pike

Soaring above the Eden Valley, the North Pennine escarpment is a striking feature above Dufton. This walk circumnavigates Dufton Pike, offering dramatic views of the limestone crags of Great Rundale. Ideal habitat for buzzards, these birds are regularly seen in this area. More elusive, the ring ouzel may also be found, singing from one of the gnarled hawthorn trees that dot the hillside.

# Keys

## Easy Grade Walk

Suitable for most people: easy, comfortable walking, may be some stiles.

## Medium Grade Walk

Typically a country walk with some hills, stiles and muddy paths.  
Boots advised.

## Hard Grade Walk

Hill walk. May have steep or strenuous climbs. Rough moorland.  
Boots essential.

A guide is also provided to indicate the best times of year to see key bird species. This can be interpreted as follows:

## BEST TIME TO VISIT



Please be aware that the weather can change rapidly in the North Pennines. Always carry suitable wet weather clothing with you and remember that visibility will be poor at higher altitudes in low cloud conditions.



© Crown Copyright. All rights reserved. Durham County Council. LA100049055. 2012.



Front cover illustration and all bird illustrations are by Mike Langman. Other images are © Natural England/Charlie Hedley or © North Pennines AONB Partnership.



Information is correct at the time of production (Aug 2012). Every effort has been made to ensure that information is accurate. However, the AONB Partnership and its Staff Unit cannot be held responsible for errors or omissions. Please check critical information before travel. Inclusion is not a recommendation by the AONB Partnership and in itself is not necessarily a guarantee of quality.



North Pennines AONB Partnership, Weardale Business Centre, The Old Co-op Building, 1 Martin Street, Stanhope, Bishop Auckland, County Durham DL13 2UY.

# Information Point



1:50,000 – Landranger 91  
1:25,000 – Explorer OL19



Public toilets in car park. Pub, local shop and Youth Hostel in Dufton



7 km (4.3 miles). Circular route



At Knock (NY680270)



**Medium.** Path is rocky and may be muddy in places



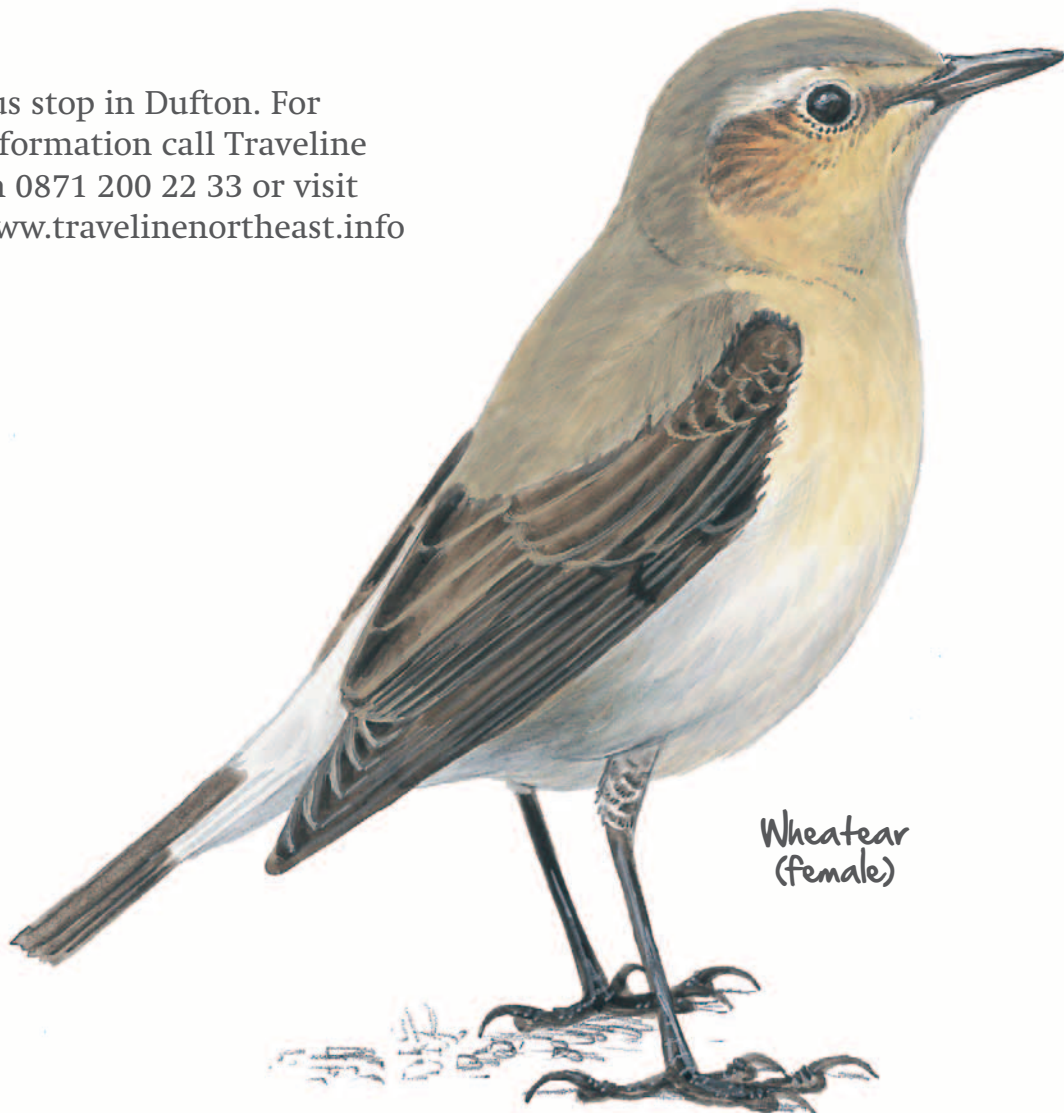
Visit [www.northpennines.org.uk](http://www.northpennines.org.uk) for information on green places to stay



Car park in Dufton at NY689249



Bus stop in Dufton. For information call Traveline on 0871 200 22 33 or visit [www.travelinenortheast.info](http://www.travelinenortheast.info)



Wheatear  
(female)



# Walk Directions

Leave the car park and turn right on to the main road through the village (take care!). Follow the road as it bends to the left and then as the road bends to the right continue straight ahead past Old Dufton Hall Farmhouse and along a track between buildings.

Continue along this track for 800m to Pusgill House with the conical peak of Dufton Pike clearly visible ahead. Go through 3 gates and keep on the track as it skirts to the right of Dufton Pike.

After a fairly long, steady climb, you pass some sheep pens on your left. Approximately 60m beyond these, a yellow-topped post in the wall marks the location of a stile. Cross this and head down the hill to a second yellow-topped post and stile. Turn right to join the track that continues around the base of Dufton Pike alongside Great Rundale Beck.

Where the track divides, take the right fork as indicated by the post and marker. Continue over a stile in a wall keeping the beck on your right. Go over a further stone stile in the wall beside an old hawthorn tree. The path then divides. Take the lower, right hand path which continues more or less straight ahead with the wall and beck on your right.

At the bottom of the hill do not turn right. Bear left along the track, joining the Pennine Way. Follow the track up hill and between lines of old trees, through a gate and behind the buildings at Halsteads. Keep on the tree-lined path, over some stiles and through some gates to Coatsike Farm.

Follow the track through Coatsike Farm and continue until the track bends to the right and a footpath continues straight ahead marked Pennine Way. Take this footpath and continue through several gates and across a stream. When the path meets a track, turn right and re-trace your steps back to Dufton.



Landscape near Knock

# Walk 11

## Dufton Pike



- 1 The first view of the wheatear is often its bold white rump as it flies away. These birds may also be seen standing and bobbing on a small mound or boulder.
- 2 Watch for buzzards soaring above Dufton Pike.
- 3 Ring ouzels feed on very short turf but are more easily located as they sing from a tree or bush. Typically associated with remote, inaccessible crags they are locally known as Fell Throistle or Crag Starling.
- 4 The limestone comprising these impressive crags was formed during the Carboniferous Period around 330 million years ago. These rocks are cut by mineral veins and have been mined in the past for lead ore and barytes.
- 5 Listen for singing warblers and redstarts on the path above Great Rundale Beck.
- 6 Hurning Lane is of medieval origin and is an ancient drove road. The hedgerow trees and hawthorn bushes flanking it are hundreds of years old and are likely to date from the period of enclosure in the 16th or 17th centuries.



Ring ouzel

### BEST TIME TO VISIT

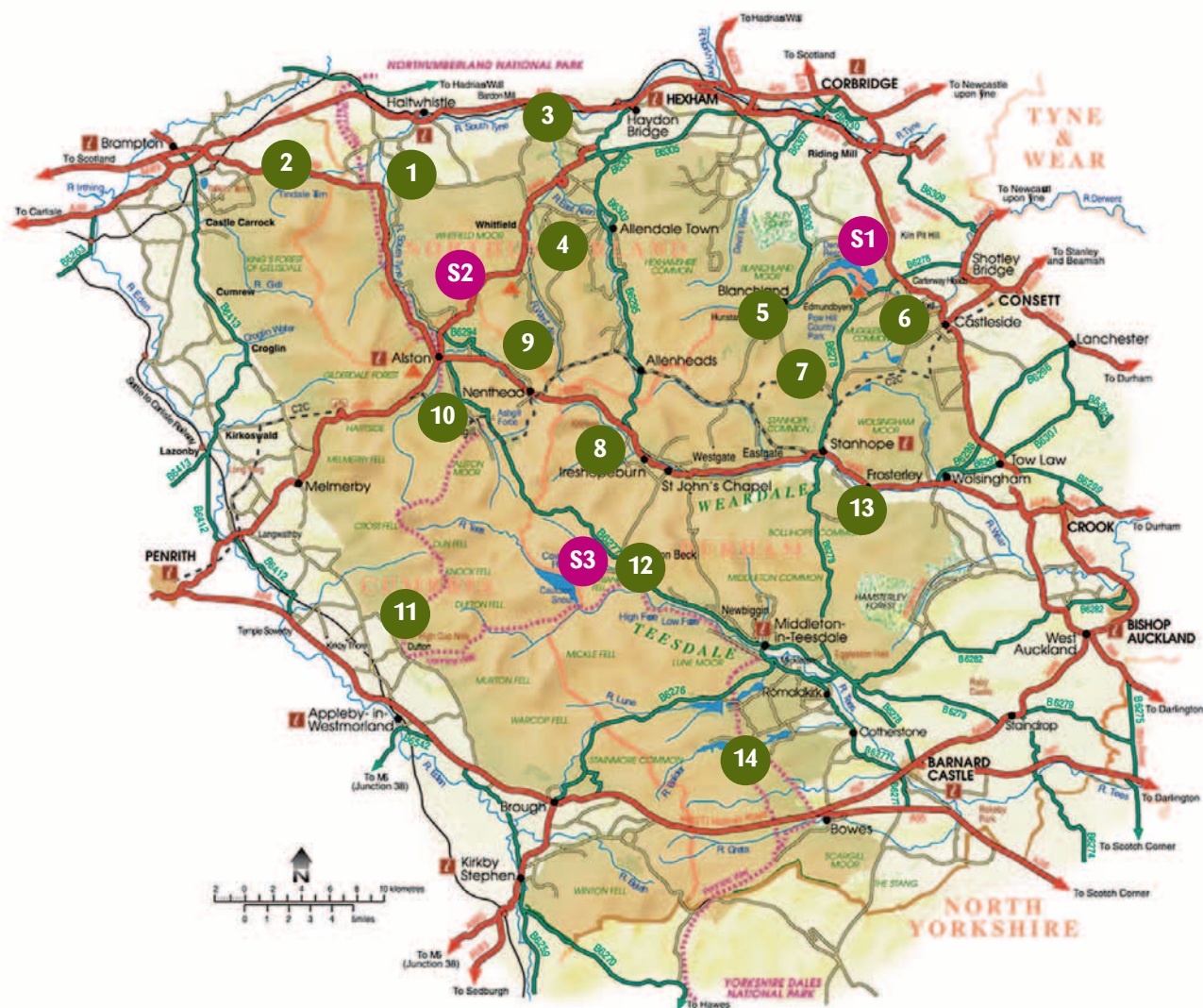
JAN FEB MAR **APR** **MAY** **JUN** **JUL** AUG SEP OCT NOV DEC







# Map of the North Pennines AONB showing location of Walks and Sites



- |                                 |                               |
|---------------------------------|-------------------------------|
| 1 Lambley and the South Tyne    | 10 Garrigill                  |
| 2 Tindale Tarn                  | 11 Dufton Pike                |
| 3 Allen Banks and Staward Gorge | 12 Upper Teesdale             |
| 4 Chimneys on Dryburn Moor      | 13 Howdon Burn                |
| 5 Blanchland                    | 14 Blackton Reservoir         |
| 6 Derwent Gorge                 | S1 Derwent Reservoir          |
| 7 Burnhope Head                 | S2 Ouston Fell                |
| 8 Cowshill                      | S3 Harwood Beck and Widdybank |
| 9 Wellhope Moor                 |                               |

# NORTH PENNINES



Area of Outstanding Natural Beauty



The North Pennines is one of England's most special places – a peaceful, unspoilt landscape with a rich history and vibrant natural beauty. In recognition of this it is designated as an Area of Outstanding Natural Beauty (AONB). The area is also a Global Geopark – an accolade endorsed by UNESCO.

This 4.3 mile circular route circumnavigates Dufton Pike on the Eastern Fellside. It's great habitat for buzzards and you may also see the more elusive ring ouzel, singing from one of the gnarled hawthorns that dot the hillside.

North Pennines AONB Partnership  
[www.northpennines.org.uk](http://www.northpennines.org.uk)  
+44 (0)1388 528801  
[info@northpenninesaonb.org.uk](mailto:info@northpenninesaonb.org.uk)



NorthPenninesAONB



@NorthPennAONB



northpennines



The AONB Partnership has a Green  
Tourism award for its corporate office

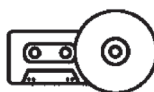


**Please ask us if you would like this document  
summarised in another format.**

**[info@northpenninesaonb.org.uk](mailto:info@northpenninesaonb.org.uk)  
01388 528801**



**Braille**



**Audio**



**Large  
Print**

This pdf download has been funded by:



...as part of their support for the North Pennines AONB Partnership