

North Pennine Birdwalks

Walk 10: Garrigill



Landscapes
for life
.org.uk

NORTH PENNINES
One of the
AONB family

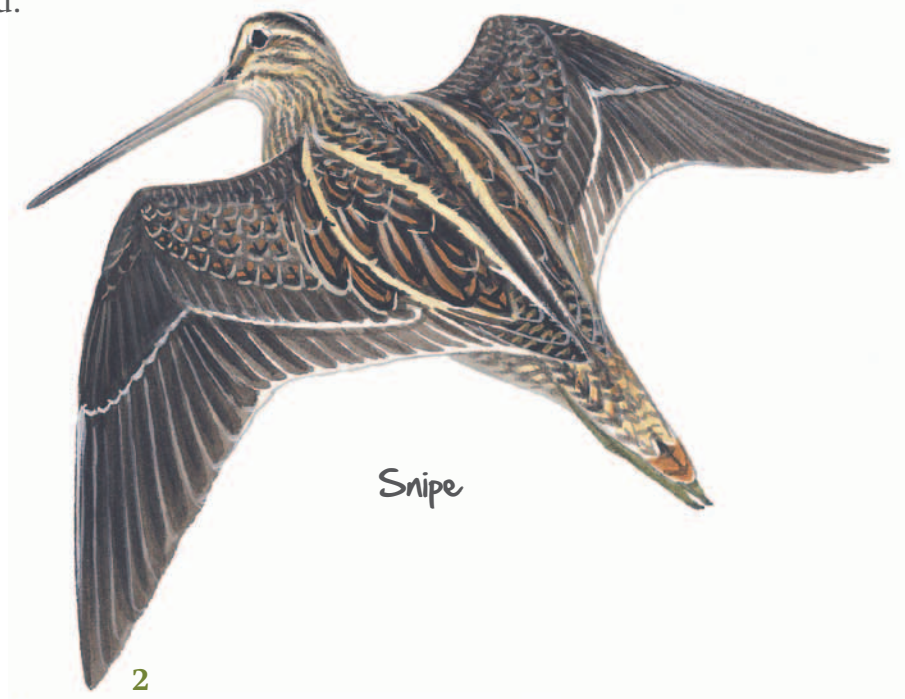
The Birdwatchers Code of Conduct

Birds are very vulnerable to disturbance, especially during the breeding season. It is all too easy to inadvertently harm a bird or its young while trying to watch them.

For example, if an adult bird is prevented from returning to its nest, eggs or chicks may quickly chill and die. Straying from a footpath towards a nest site may also leave a scent trail that a predator is later able to follow.

To ensure that you enjoy watching birds without harming them or their young, please always follow this code of conduct:

- The welfare of the birds must come first. Disturbance to birds and their habitats should be kept to a minimum.
- Keep to footpaths, especially during the bird breeding season (March – August).
- Avoid disturbing birds or keeping them away from their nests for even short periods especially in wet or cold weather.
- Do not try to find nests. **All birds, nests, eggs and young are protected by law and it is illegal to harm them.**
- Keep dogs on a short lead.
- Leave gates and property as you find them.
- Take your litter home with you.



Walk 10

Garrigill



River South Tyne

The South Tyne is a narrow, fast flowing river as it tumbles north from the village of Garrigill. Travelling along its bank, this walk offers you the chance to see species such as common sandpiper, oystercatcher and grey wagtail. The surrounding fields abound with breeding waders during spring and summer and during winter large flocks of fieldfare and redwing may be seen.

Keys

Easy Grade Walk

Suitable for most people: easy, comfortable walking, may be some stiles.

Medium Grade Walk

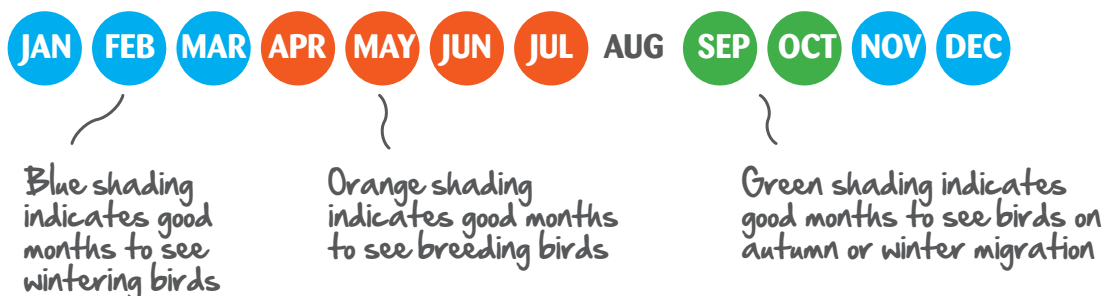
Typically a country walk with some hills, stiles and muddy paths.
Boots advised.

Hard Grade Walk

Hill walk. May have steep or strenuous climbs. Rough moorland.
Boots essential.

A guide is also provided to indicate the best times of year to see key bird species. This can be interpreted as follows:

BEST TIME TO VISIT



Please be aware that the weather can change rapidly in the North Pennines. Always carry suitable wet weather clothing with you and remember that visibility will be poor at higher altitudes in low cloud conditions.



© Crown Copyright. All rights reserved. Durham County Council. LA100049055. 2012.



Front cover illustration and all bird illustrations are by Mike Langman. Other images are © Natural England/Charlie Hedley or © North Pennines AONB Partnership.



Information is correct at the time of production (Oct 2012). Every effort has been made to ensure that information is accurate. However, the AONB Partnership and its Staff Unit cannot be held responsible for errors or omissions. Please check critical information before travel. Inclusion is not a recommendation by the AONB Partnership and in itself is not necessarily a guarantee of quality.



North Pennines AONB Partnership, Weardale Business Centre, The Old Co-op Building, 1 Martin Street, Stanhope, Bishop Auckland, County Durham DL13 2UY.

Information Point



1:50,000 – Landranger 86/87
1:25,000 – Explorer OL31



Bus stop in Garrigill. For information call Traveline on 0871 2002233



8.5 km (5 miles). Circular route



Medium. May be muddy in places. Many stiles



Public toilets, pub and village shop/Post Office in Garrigill.



In Garrigill



Small parking area in Garrigill next to the red phone box at NY745416



Visit www.northpennines.org.uk for information on green places to stay



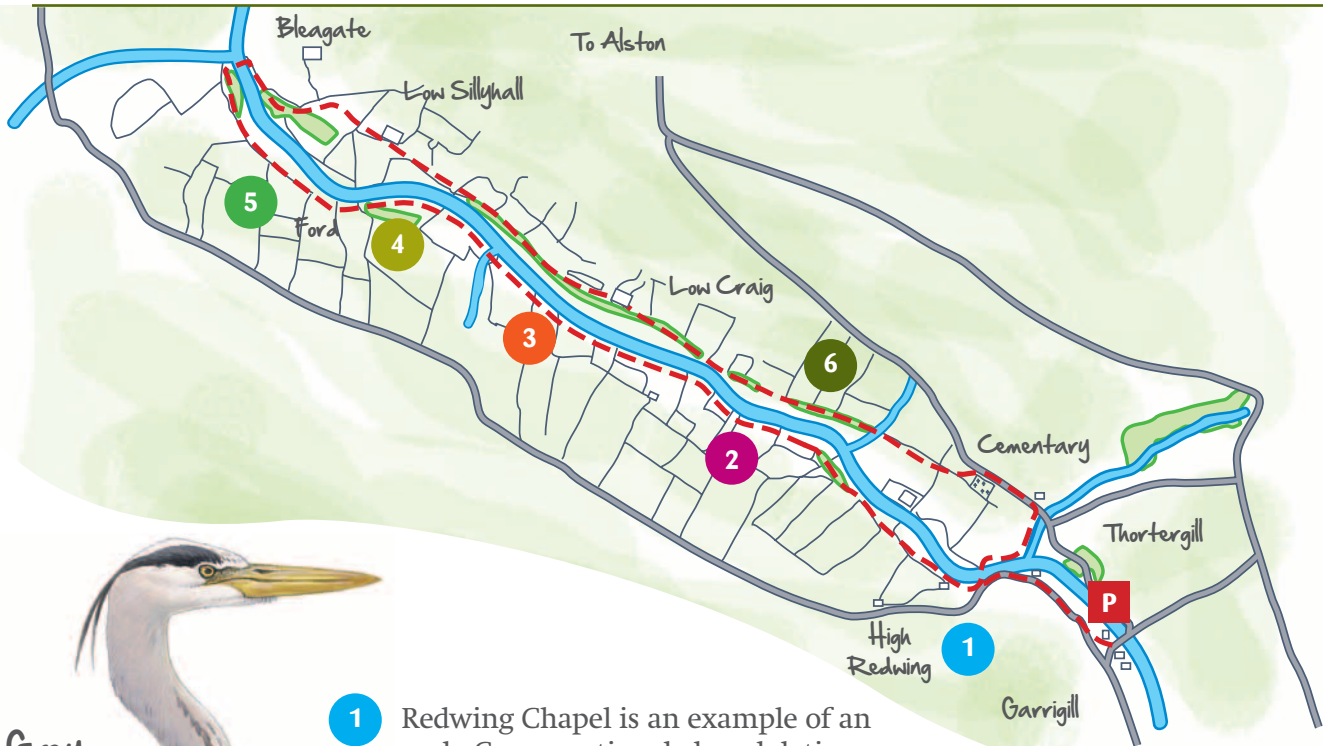
Common
sandpiper

Walk Directions

- Walk through Garrigill with the Post Office behind you and keep on the road out of the village. Take the third waymarked path on the right which is signed Pennine Way, South Tyne Trail, Alston.
- Follow the path and skirt to the left of a small area of old farm machinery and spoil. Go through a stile in the wall. Continue to follow the clear path which slopes uphill and then runs parallel to the River South Tyne for 1.8 km.
- Pass the footbridge across the river and continue with the river on your right, passing over a stile and then a footbridge. The path continues for 700m passing over a number of stiles.
- On reaching a ford, go over a stile and continue, initially with the fence on your left. Skirt to the left of an area of birch and alder wood and cross a small bridge leading up to a footbridge across the South Tyne itself. Cross the South Tyne, turn right and follow the bank downstream. After c50m the path meets a track. Turn left and follow the track a few metres to a small gate on the right. Go through this.
- Follow the path up to another gate and continue straight up the field for 100m, keeping the wall on your left. On reaching the second gateway on the left, turn right and walk across two fields towards Low Sillyhall. Follow the path through the gateway to the right of Low Sillyhall and where it divides take the left fork. Go through a small gate in the wall and follow the path keeping the fence on your right.
- The path skirts to the left of buildings at Low Craig and then continues ahead with the wall on the right.
- Cross the bridge over a small waterfall and then follow the path, this time with the wall on your left. At the end of the wall, cut diagonally up the field ahead to meet the road at the corner of a cemetery.
- Turn right at the road (take care!) and after the first cluster of buildings opposite Thortergill, take the bridleway leading off to the right.
- Follow the path down to the river and then alongside it to the bridge. Cross this and turn left to return to the road. Turn left and return to Garrigill.

Walk 10

Garrigill



Grey heron

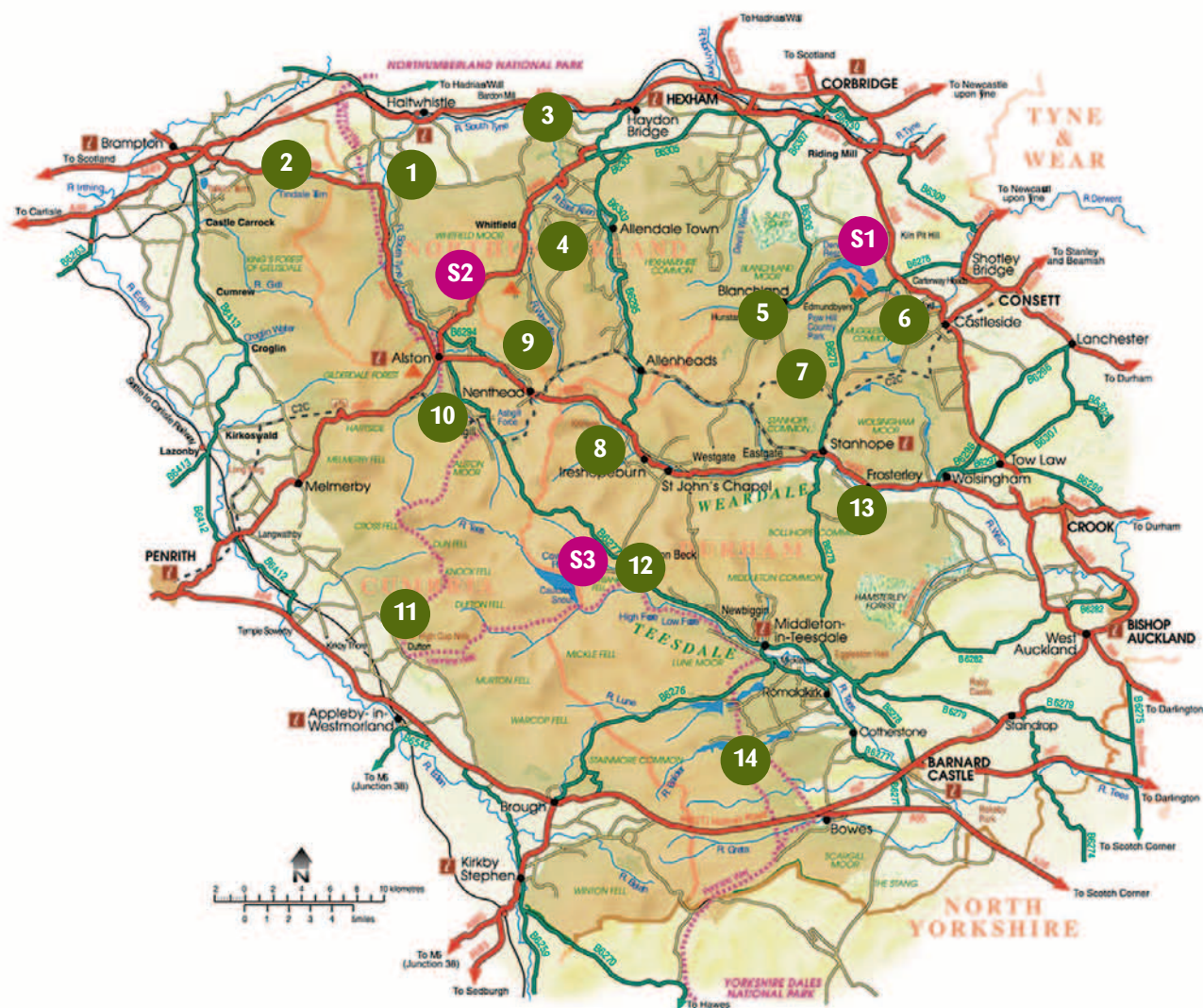
- 1** Redwing Chapel is an example of an early Congregational chapel dating from 1756 and would have been mainly attended by lead miners. It is now sadly in a state of dereliction.
- 2** Oystercatchers and common sandpipers are often seen on areas of shingle at the river's edge. Dippers, herons and grey wagtails may also be seen in and around the river.
- 3** Rivers and wetlands in the North Pennines still support good numbers of water voles, Britain's fastest declining mammal. Water voles need lush bank-side vegetation with little or no grazing pressure.
- 4** Many birds inhabit riverside woodland. Look out for tits, thrushes and warblers in spring and summer.
- 5** The shingle banks of many rivers in the North Pennines have been contaminated by waste from historic mining for lead, silver, zinc, barium and fluorspar. In some areas rare grasslands have developed dominated by heavy-metal tolerant species such as spring sandwort, alpine pennycress, thyme and thrift.
- 6** Rushy pastures and allotments support important numbers of breeding waders, black grouse and grey partridge.

BEST TIME TO VISIT

JAN FEB MAR **APR** **MAY** **JUN** **JUL** AUG SEP OCT NOV DEC



Map of the North Pennines AONB showing location of Walks and Sites



- | | |
|---------------------------------|-------------------------------|
| 1 Lambley and the South Tyne | 10 Garrigill |
| 2 Tindale Tarn | 11 Dufton Pike |
| 3 Allen Banks and Staward Gorge | 12 Upper Teesdale |
| 4 Chimneys on Dryburn Moor | 13 Howdon Burn |
| 5 Blanchland | 14 Blackton Reservoir |
| 6 Derwent Gorge | S1 Derwent Reservoir |
| 7 Burnhope Head | S2 Ouston Fell |
| 8 Cowshill | S3 Harwood Beck and Widdybank |
| 9 Wellhope Moor | |

NORTH PENNINES



Area of Outstanding Natural Beauty



The North Pennines is one of England's most special places – a peaceful, unspoilt landscape with a rich history and vibrant natural beauty. In recognition of this it is designated as an Area of Outstanding Natural Beauty (AONB). The area is also a Global Geopark – an accolade endorsed by UNESCO.

Enjoy this 5 mile circular walk in the stunning South Tyne Valley. This route travels along the banks of this tumbling upland river and you're likely to see common sandpiper, oystercatchers and grey wagtail, as well as lots of waders in the spring and summer.

North Pennines AONB Partnership
www.northpennines.org.uk
+44 (0)1388 528801
info@northpenninesaonb.org.uk



NorthPenninesAONB



@NorthPennAONB



northpennines



The AONB Partnership has a Green
Tourism award for its corporate office

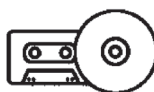


Please ask us if you would like this document
summarised in another format.

info@northpenninesaonb.org.uk
01388 528801



Braille



Audio



Large
Print

This pdf download has been funded by:



...as part of their support for the North Pennines AONB Partnership